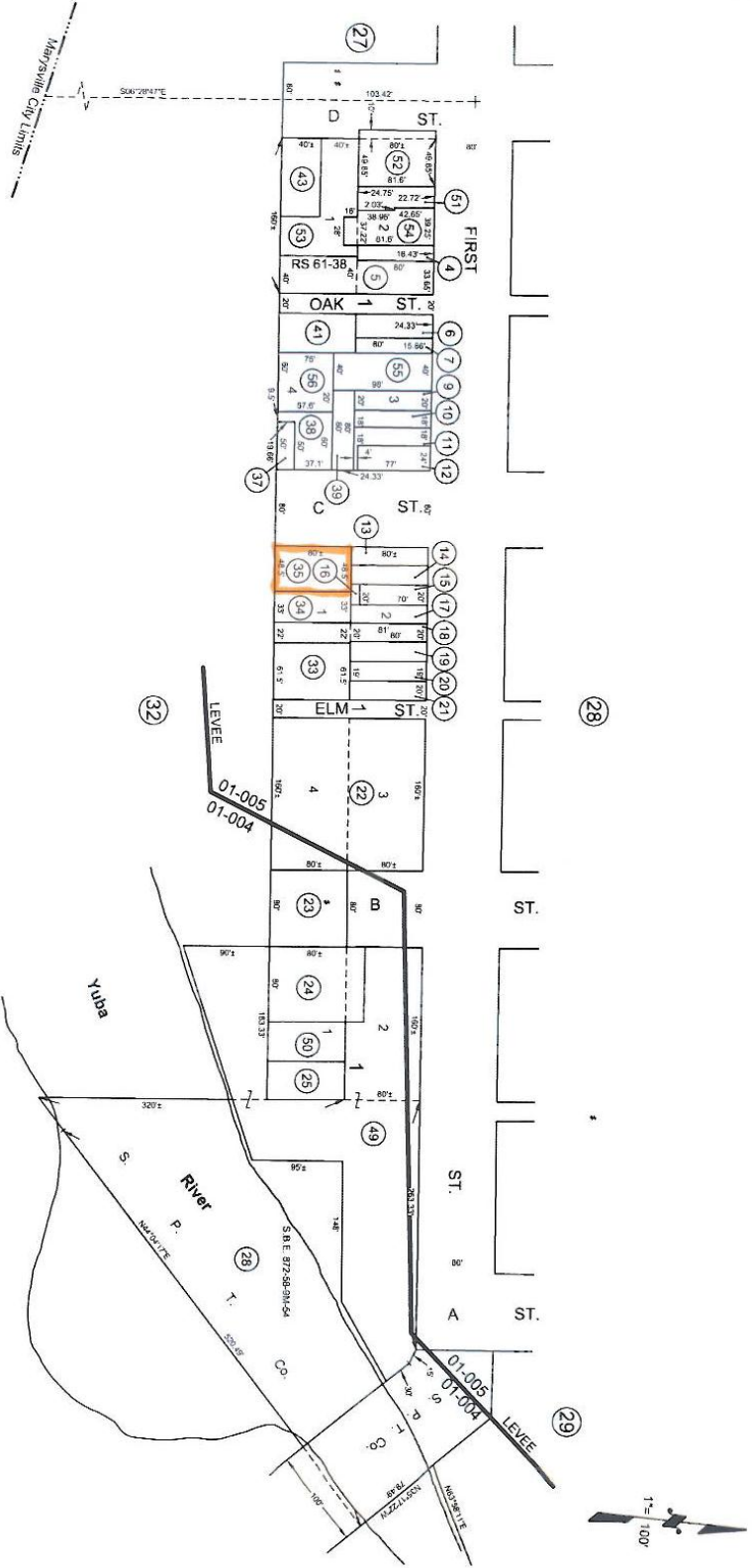


NOTE: This map was prepared for assessment purposes only, and is not intended to illustrate legal building sites or establish precedence over local ordinances. Critical information for assessment purposes should be obtained from recorded documents and local governing agencies.

**POR. OLD CITY & POR. SEC. 24,25
T.15N., R.3E., M.D.B. & M.-PROJ., NEW HELVETIA RANCHO**

Tax Area Code
01-005
01-004

10-30



R.S. - Bk. 61, Pg. 38 (R.O.S. 92-42)

NOTE - Assessor's Block Numbers Shown in Ellipses
Assessor's Parcel Numbers Shown in Circles

CITY OF MARYSVILLE
Assessor's Map Bk. 10, Pg. 30
County of Yuba, Calif.
Year-1973